

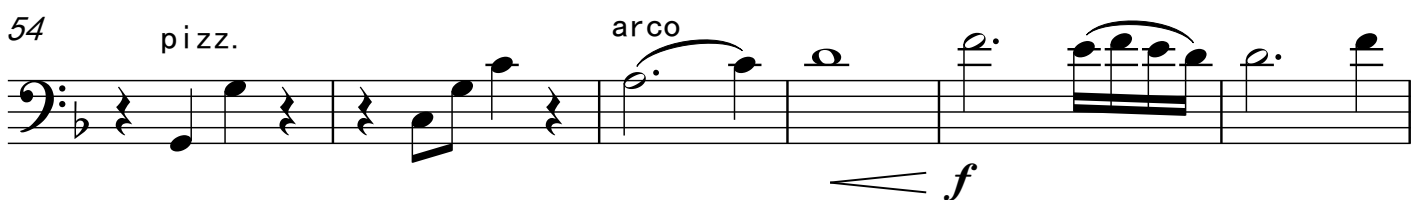
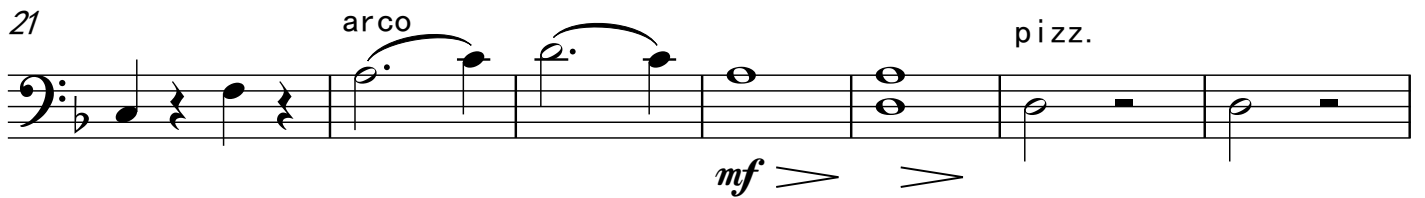
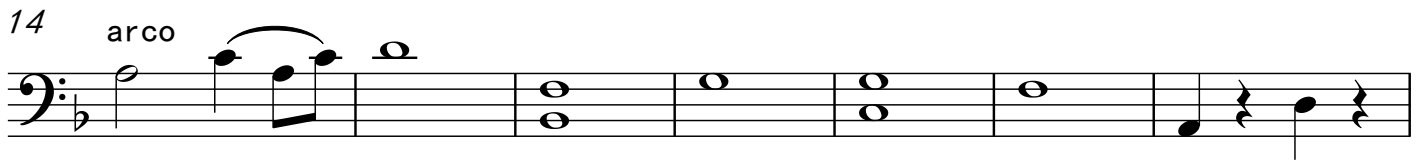
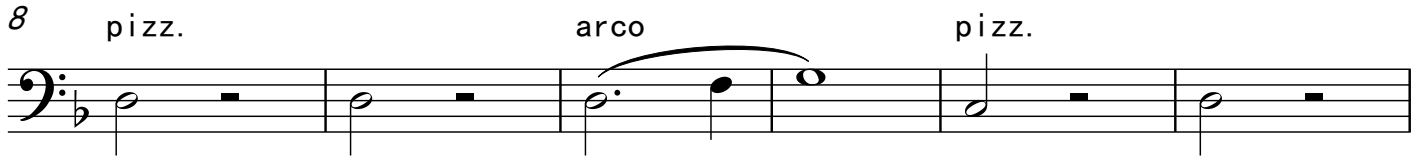
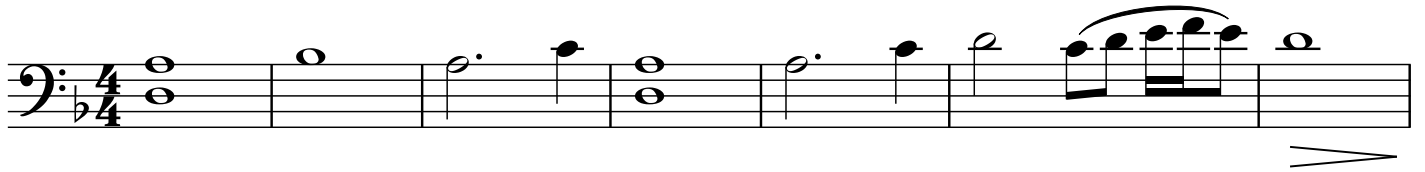
# 葬花吟

电视连续剧红楼梦组曲

王立平作曲

金韵制谱

Moderato 中速



红楼梦 - 葬花吟 - 大提琴

2 60

*f*

Detailed description: This system contains measures 60 to 64. It begins with a double bar line and a measure rest. The music starts at measure 60 with a quarter note G2, followed by eighth notes A2, B2, and C3. Measure 61 continues with eighth notes D3, E3, and F3. Measure 62 has a quarter note G3, followed by eighth notes A3, B3, and C4. Measure 63 has a quarter note D4, followed by eighth notes E4, F4, and G4. Measure 64 has a quarter note A4, followed by eighth notes B4, C5, and D5. A dynamic marking of *f* is placed below the staff.

65

*mf* *mf*

Detailed description: This system contains measures 65 to 72. Measure 65 has a quarter note G2, followed by eighth notes A2, B2, and C3. Measure 66 has a quarter note D3, followed by eighth notes E3, F3, and G3. Measure 67 has a quarter note A3, followed by eighth notes B3, C4, and D4. Measure 68 has a quarter note E4, followed by eighth notes F4, G4, and A4. Measure 69 has a quarter note B4, followed by eighth notes C5, D5, and E5. Measure 70 has a quarter note F5, followed by eighth notes G5, A5, and B5. Measure 71 has a quarter note C6, followed by eighth notes D6, E6, and F6. Measure 72 has a quarter note G6, followed by eighth notes A6, B6, and C7. Dynamic markings of *mf* are placed below the staff.

73

*mp* *p*

Detailed description: This system contains measures 73 to 79. Measure 73 has a quarter note G2, followed by eighth notes A2, B2, and C3. Measure 74 has a quarter note D3, followed by eighth notes E3, F3, and G3. Measure 75 has a quarter note A3, followed by eighth notes B3, C4, and D4. Measure 76 has a quarter note E4, followed by eighth notes F4, G4, and A4. Measure 77 has a quarter note B4, followed by eighth notes C5, D5, and E5. Measure 78 has a quarter note F5, followed by eighth notes G5, A5, and B5. Measure 79 has a quarter note G6, followed by eighth notes A6, B6, and C7. Dynamic markings of *mp* and *p* are placed below the staff.

80

Detailed description: This system contains measures 80 to 86. Measure 80 has a quarter note G2, followed by eighth notes A2, B2, and C3. Measure 81 has a quarter note D3, followed by eighth notes E3, F3, and G3. Measure 82 has a quarter note A3, followed by eighth notes B3, C4, and D4. Measure 83 has a quarter note E4, followed by eighth notes F4, G4, and A4. Measure 84 has a quarter note B4, followed by eighth notes C5, D5, and E5. Measure 85 has a quarter note F5, followed by eighth notes G5, A5, and B5. Measure 86 has a quarter note G6, followed by eighth notes A6, B6, and C7.

87

pizz. arco *mp* *f*

Detailed description: This system contains measures 87 to 92. Measure 87 has a quarter note G2, followed by eighth notes A2, B2, and C3. Measure 88 has a quarter note D3, followed by eighth notes E3, F3, and G3. Measure 89 has a quarter note A3, followed by eighth notes B3, C4, and D4. Measure 90 has a quarter note E4, followed by eighth notes F4, G4, and A4. Measure 91 has a quarter note B4, followed by eighth notes C5, D5, and E5. Measure 92 has a quarter note F5, followed by eighth notes G5, A5, and B5. Dynamic markings of *mp* and *f* are placed below the staff. Performance markings 'pizz.' and 'arco' are placed above the staff.

93

*f*

Detailed description: This system contains measures 93 to 97. Measure 93 has a quarter note G2, followed by eighth notes A2, B2, and C3. Measure 94 has a quarter note D3, followed by eighth notes E3, F3, and G3. Measure 95 has a quarter note A3, followed by eighth notes B3, C4, and D4. Measure 96 has a quarter note E4, followed by eighth notes F4, G4, and A4. Measure 97 has a quarter note B4, followed by eighth notes C5, D5, and E5. A dynamic marking of *f* is placed below the staff.

98

pizz. arco

Detailed description: This system contains measures 98 to 103. Measure 98 has a quarter note G2, followed by eighth notes A2, B2, and C3. Measure 99 has a quarter note D3, followed by eighth notes E3, F3, and G3. Measure 100 has a quarter note A3, followed by eighth notes B3, C4, and D4. Measure 101 has a quarter note E4, followed by eighth notes F4, G4, and A4. Measure 102 has a quarter note B4, followed by eighth notes C5, D5, and E5. Measure 103 has a quarter note F5, followed by eighth notes G5, A5, and B5. Performance markings 'pizz.' and 'arco' are placed above the staff.

104

pizz. arco *p*

Detailed description: This system contains measures 104 to 108. Measure 104 has a quarter note G2, followed by eighth notes A2, B2, and C3. Measure 105 has a quarter note D3, followed by eighth notes E3, F3, and G3. Measure 106 has a quarter note A3, followed by eighth notes B3, C4, and D4. Measure 107 has a quarter note E4, followed by eighth notes F4, G4, and A4. Measure 108 has a quarter note B4, followed by eighth notes C5, D5, and E5. Dynamic marking of *p* is placed below the staff. Performance markings 'pizz.' and 'arco' are placed above the staff.

109

*sf* *pp*

Detailed description: This system contains measures 109 to 113. Measure 109 has a quarter note G2, followed by eighth notes A2, B2, and C3. Measure 110 has a quarter note D3, followed by eighth notes E3, F3, and G3. Measure 111 has a quarter note A3, followed by eighth notes B3, C4, and D4. Measure 112 has a quarter note E4, followed by eighth notes F4, G4, and A4. Measure 113 has a quarter note B4, followed by eighth notes C5, D5, and E5. Dynamic markings of *sf* and *pp* are placed below the staff.