

音乐
红楼
梦

Musical Dreams of the Red Mansion



September 24, 2023 SSA Auditorium, UT Dallas

Dallas Huayun Chinese Orchestra
Great Land Choral Society
Sophia Liu



THE UNIVERSITY OF TEXAS AT DALLAS
Center for Asian Studies



Program, part 1

Full Orchestra

迎宾曲 Welcome Song

Composed by 顾冠仁 Guanren Gu

花好月圆 Lovely Flowers, Round Moon

Composed by 黄贻均 Yijun Huang

Arranged by 彭修文 Xiuwen Peng

喜洋洋 Beaming with Joy

Composed by 刘明源 Mingyuan Liu

彩云追月 Colorful Clouds Chasing the Moon

Composed by 任光 Guang Ren

Arranged by 周仲康 ZhongKang Zhou

京调 The Peking Opera Tune

Composed by 顾冠仁 Guanren Gu

赛马 Horse Racing

Composed by 黄海怀 Haihuai Huang

Program, part 2

Solos and Ensembles

雨碎江南 Rain in Jiang Nan

Composed by 河图 Tu He

琵琶 Pipa: 田程锦 Chengjin Tian

低音提琴 Double Bass: 王鹏 Peng Wang

梁山伯与祝英台 Butterfly Lovers

Composed by 何占豪 Zhanhao He, 陈刚 Gang Chen

钢琴 Piano: 卢谙注 Annsun Lu

奔驰在千里草原 Galloping on the Grassland

Composed by 王国潼 GuoTong Wang, 李秀琪 Xiuqi Li

二胡 Erhu: 陈大欣 Daniel Chen 卢卫平 Weiping Lu 王健丽 Jenny Wang

黄承汉 Chenghan Huang 手风琴 Accordion: 萧诗莉 Sherly Xiao

琵琶 Pipa: 田程锦 Chengjin Tian 扬琴 Yangqin: Stephanie Zeng

中阮 Tenor Ruan: 何清萍 QP He 大提琴 Cello: 王金辉 James Wang

打击乐 Percussions: 高梅 Mae Gao 王鹏 Peng Wang 李睿杰 Bryan Li

落花飞 The Flying Petals

Composed by Chang Jing 常静

古筝 Guzheng: 张敏 Min Zhang with students Lanna Zhang and April Song

笛子 Bamboo Flute: 黄承汉 Chenghan Huang

草原之歌 The Song of Grassland

Composed by 张宝源 Baoyuan Zhang

低音提琴 Double Bass: 王鹏 Peng Wang

钢琴 Piano: 程弘灿 Luke Cheng

渔舟唱晚 Fisherman's Song at Dusk

Chinese Traditional Folk Song

古筝 Guzheng: 胡红媛 Anita Hu

二胡 Erhu: 陈大欣 Daniel Chen

Program, part 3

Dreams of the Red Mansion Suite

Composed by 王立平 Liping Wang
达拉斯华韵民乐团 Huayun Orchestra
神州合唱团 Great Land Choral Society
刘香 Sophia Liu

序曲 Overture

红豆曲 Poem of the Red Bean

题帕诗 Handkerchief Melody

晴雯歌 The Song of Qing Wen

枉凝眉 Longing in Vain

聪明累 The Scheming Wang Xifeng

葬花吟 Elegy on Flowers

Dreams of the Red Mansion is a novel written during the 18th century by Cao Xueqin, and is recognized as one of the Four Great Classical Novels of Chinese literature. The novel is semi-autobiographical and mirrors the rise and decline of author Cao Xueqin's own family and, by extension, of the Qing Dynasty.

The novel's primary story revolves around the ill-fated love between **Jia Baoyu**, the carefree, intelligent, and heir apparent of the Jia family, and his sickly and gentle cousin, **Lin Daiyu**. Despite their deep love for each other, social circumstances and family expectations lead Baoyu to marry another cousin, Xue Baochai, who is equally intelligent but more worldly and tactful.

Poem of the Red Bean delves deep into the emotional turmoil of Baoyu, a character caught in a web of complex relationships and societal expectations. The song is a poignant expression of his unrequited love for Daiyu, his childhood companion. The lyrics are laden with symbolic references that add layers of meaning: red beans signify his unfulfilled love, while jade alludes to both his name and inner conflicts. Vivid imagery of willows, blossoms, and even a painted tower set the stage for this tale of love and sorrow. With its rich symbolism and evocative language, the song captures the universal experience of love, longing, and the bittersweet passage of time.

Handkerchief Melody is a soul-stirring composition that explores the depths of sorrow and unfulfilled desires. The song is a poetic representation of the Daiyu's emotional state, and is filled with rich symbolism: from tears likened to precious gems to a fine silk handkerchief that becomes a vessel for shared sorrow. The song even references the historical Xiang River, known in Chinese lore for tales of lost love. Through powerful imagery and evocative language, the song captures the universal themes of longing and melancholy, inviting the listener to ponder the complexities of love and the human condition.

The Song of Qing Wen offers a glimpse into the complex character of Qing Wen, one of the maids in the story known for her vibrant personality and, at times, contentious nature. The song captures her inner conflict: a spirit that yearns for more than her lowly station in life allows. With themes of societal constraints and the bitterness of fate, the lyrics weave a tapestry of Qing Wen's charm, cleverness, and the disdain she consequently draws. The song encapsulates the notion of unfulfilled desires and the quandaries of being bound by one's social standing, providing a rich emotional landscape for the audience to explore.

Longing in Vain acts as a concise overview of the story's major themes. It explores the challenges of unattainable love and questions the role of fate in shaping our lives. With vivid imagery like a moon reflected in water, the song captures the essence of the fleeting and sometimes elusive nature of love and destiny. It introduces the audience to the complex emotional terrain that will be explored throughout the tale.

The Scheming Wang Xifeng focuses on one of the story's most complex characters, Wang Xifeng. Known for her intelligence and cunning, she is a master of manipulation. However, this song reveals the tragic irony of her life: her cleverness ultimately leads to her downfall. Through powerful imagery and poignant lines, the song delves into the transient nature of wealth, relationships, and clever schemes. It serves as a cautionary tale about the impermanence of worldly gains, reminding the audience of the ever-changing fortunes that await us all.

Elegy on Flowers is a contemplative piece that addresses the transient nature of beauty and life itself. Through the metaphor of wilting flowers, the song explores the inevitable passage of time and the sorrow it brings. The lyrics evoke the fleeting moments of beauty that life offers, only to underscore their impermanence with imagery of falling petals and changing seasons. This song serves as a reminder of life's ephemeral joys and sorrows, inviting the audience to reflect on the deeper themes of the story.

Huayun Orchestra

指挥 Conductor: 王金辉 James Wang

音乐指导 Music Director: 陈大欣 Daniel Chen 马小玉 Xiaoyu Ma
胡红媛 Anita Hu 王鹏 Peng Wang 张敏 Min Zhang

主持人 Host: 张晓晶 Jean Zhang 王皓松 Tony Wang

二胡 Erhu: 陈大欣 Daniel Chen 麦青尧 Yaw Mak 王溪 Xi Wang
卢卫平 Weiping Lu 王健丽 Jenny Wang 黄承汉 Chenghan Huang

琵琶 Pipa: 张涛 Genny Zhang 田程锦 Amy Tian

笛子 Bamboo Flute: 田吉民 Jimin Tian 蓝冰侠 Bingxia Lan
黄承汉 Chenghan Huang

古筝 Guzheng: 胡红媛 Anita Hu 张敏 Min Zhang
于璐兰 Evelyn Yu Lanna Zhang

扬琴 Yangqin: 马小玉 Xiaoyu Ma Stephanie Zeng

中阮 Tenor Ruan: 何清萍 QP He

大提琴 Cello: 王鹏 Peng Wang Alice Cai Ava Li

低音提琴 Double Bass: 王鹏 Peng Wang

键盘 Keyboard: 田野 Field Zhang 高梅 Mae Gao
萧诗莉 Sherly Xiao 程弘灿 Luke Cheng 卢谕注 Annsun Lu

打击乐 Percussions: 宋瑞清 Vivi Song 程弘灿 Luke Cheng
高梅 Mae Gao 李睿杰 Bryan Li 卢谕注 Annsun Lu
陈怡雅 Winnie Chen

团长 Director: 王金辉 James Wang

副团长 Associate Director: 麦青尧 Yaw Mak

财务 Treasurer: 宋晓晖 Max Song

Great Land Choral Society

特邀独唱女高音 Guest Soprano Soloist: 刘香 Sophia Liu

女高 Soprano: Ping Lu Lisha Shao Jean Sun Helen Wang
Maggie N. Yifeng Zhang Yan Zhang Canming Cobble

女低 Alto: Ye Tao Kathy Yan Wang Yun Lian
Bingqin Yan Hui Wang Jinglin Zhong Weiwei Li

男高 Tenor: Eugene Zou Sam Cheng Michael Liang

男低 Bass: Leon Huang Yanjun Zhang Xinji Li

Musical Dreams of the Red Mansion

总策划 Planner: Dennis Kratz Sharon Gou James Wang

技术总监 Technical Director: John M. Długosz

舞台监督 Stage Director: 钟炎循 Eym Soon Chong 红英 Sabrina Shi

活动执行 Event Executive: 张涛 Genny Zhang 麦青尧 Yaw Mak
Olivia Kang-Shafik 王健丽 Jenny Wang 路平 Ping Lu

录音, 摄像 A/V Crew: 李小芄 Xiaopeng Li 叶洪强 Kevin Ye
李睿娜 Rayna Li 李文荣 Wenrong Li

公关总监 Director of Public Relation: 田程锦 Amy Tian

Special Thanks

New Star Chiropractic & Acupuncture, Zhanping Lu, D.C.
北方食品集团 North Food Group 姚振华 Zhenhua Yao
美瞳珠宝 MT Jewelry Studio 刘香 Sophia Liu
汪燕理财顾问 Yan Wang Insurance



王金辉
指挥

James Wang
Conductor



张晓晶
主持人

Jean Zhang
Host



马小玉
扬琴

Xiaoyu Ma
Yangqin



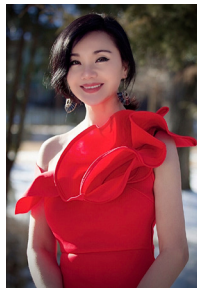
胡红媛
古筝

Anita Hu
Guzhang



田程锦
琵琶

Amy Tian
Pipa



刘香
女高音

Sophia Liu
Soprano



王皓松
主持人

Tony Wang
Host



陈大欣
二胡

Daniel Chen
Erhu



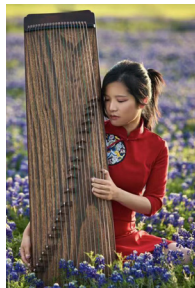
王鹏
低音提琴, 大提琴,
打击乐

Peng Wang
Double Bass, Cello,
Percussions



张敏
古筝

Min Zhang
Guzhang



于璐兰
古筝

Evelyn Yu
Guzhang



田吉民
笛子, 二胡

Jimin Tian
Bamboo Flute,
Erhu



麦青尧
二胡

Yaw Mak
Erhu



王健丽
二胡

Jenny Wang
Erhu



张涛
琵琶

Genny Zhang
Pipa



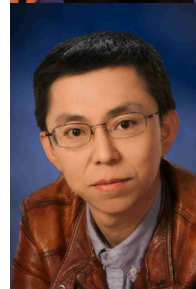
田野
电子琴

Field Zhang
Keyboard



卢卫平
二胡

Weiping Lu
Erhu



王溪
二胡

Xi Wang
Erhu



黄承汉
二胡, 笛子

Chenghan Huang
Erhu,
Bamboo Flute



扬琴

Stephanie Zeng
Yangqin



何清萍
中阮

QP He
Tenor Ruan



古筝

Lanna Zhang
Guzheng



大提琴

Ava Li
Cello



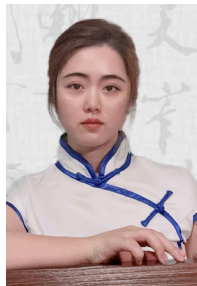
萧诗莉
电子琴

Sherly Xiao
Keyboard



程弘灿
打击乐, 钢琴

Luke Cheng
Percussions, Piano



蓝冰侠
笛子

Bingxia Lan
Bamboo Flute



大提琴

Alice Cai
Cello



高梅
电子琴, 打击乐

Mae Gao
Keyboard,
Percussions



宋瑞清
打击乐

Vivi Song
Percussions



李睿杰
打击乐

Bryan Li
Percussions



卢谕洳
打击乐, 钢琴

Annsong Lu
Percussions, Piano



陈怡雅
打击乐

Winnie Chen
Percussions

Special Guest Performer

刘香 Sophia Liu 特邀歌唱家

原创音乐诗人,

女高音歌手。

美籍华人。

主要艺术经历:

曾在湖北省歌剧舞剧院担任歌剧演员。

北京中国煤矿文工团独唱演员。

曾在中国经典歌剧和大型歌舞剧中担任主要演唱。

曾在欧美多国演出大型歌舞剧《编钟乐舞》《兵马俑》
《大唐贵妃》中担任主要演唱。

About the Orchestra

Huayun Traditional Chinese Music Orchestra is sponsored by Center for Asian Studies of the University of Texas at Dallas. It has become the most prominent Chinese music group in the DFW area. Composed of music professionals and amateur music players, music teachers and students, the band features a variety of traditional Chinese instruments. Since 2012, the Orchestra has performed in such diverse venues as The Great Land Choral Society Annual Concert, Crow Collection of Asian Art, Plano Asian American Heritage Festival, and Chinese community events and festivals. The orchestra started annual concert at UTD since 2014.

汪燕理財顧問

YAN WANG INSURANCE

- 健康保險 - 個人家庭 (BCBS, Obamacare)
- 外國人短期旅遊健康保險、長期護理、老年醫保
- 壽險、家庭保護、省稅計劃
- 申請大學助學金諮詢服務

- Health, Dental, Student
- International Travel/Medical
- Obamacare
- Medicare Supplemental
- Long Term Care
- Annuity, Life Insurance
- Financial Aid Application Consultant

免費估價
細心週到
真誠服務
歡迎來電

972-693-5745

E-mail: ywang0@yahoo.com



刘香 Sophia Liu

原创音乐诗人,
女高音歌手,
美籍华人.

主要艺术经历:

- 曾在湖北省歌舞剧院担任歌剧演员.
- 北京中国煤矿文工团独唱演员.
- 曾在中国经典歌剧和大型歌舞剧中担任主要演唱.
- 曾在欧美多国演出大型歌舞剧《编钟乐舞》《兵马俑》《大唐贵妃》中担任主要演唱.

原创词曲并演唱的歌曲有:

- 《听雨·遐想》
- 《秋境》
- 《雨帘梨花雨》
- 《清森·梧桐·飘香》
- 《梅·雪·情》
- 《午梦·友人》
- 《故乡湖北2020》
- 《借红颜》
- 《相聚好春光》
- 《因着爱》
- 《带你飞翔》
- 《蜕变》等.



New Star Chiropractic, Acupuncture & Wellness Center
Autism & ADHD Institute of Texas, 972-519-8488
Dr. Zhanping Lu, D.C., M.D. in China, Jing Su, Ph.D.
425 Maplelawn Dr. #101, Plano, TX 75075
www.DFWacupuncture.net www.autismtx.com

祝

* 华韵乐团 * 异彩纷呈

美国德州新星自然医疗中心
多动症自闭症研究所有全体同仁

吕占平医生 / 苏憬博士 携



NORTH FOOD
GROUP



Importer
Processor
Wholesaler
Distributor

北方食品集团 (长盛食品公司)

进口, 批发, 干货, 蔬菜, 肉类, 海鲜等

www.northfoodgroup.com

(800) 256-7755