

# 闹 新 春

1=G  $\frac{4}{4}$   $\frac{2}{4}$   $\frac{4}{4}$  ...

民族器乐合奏

金 韵 制谱

中速 自由地

♩ = 132

高胡 板胡

$\overset{\sim}{\underline{3}}(\underline{\cdot 33 5 6 \dot{1} 5 6}) | \underline{1} - - | \underline{3 \cdot 5 3 5 6 \cdot 5 \dot{1} \hat{6}} | \underline{5 \overset{\sim}{5}} \underline{6 5 6 5 6} | \underline{5 \overset{\sim}{5}} \underline{6 5 6 5 6} |$

高胡 板胡

$\underline{5 0 0 0 0} | \underline{\overset{5}{3} \cdot 5 6 6 \dot{1} \dot{1} \hat{6}} | \underline{5 \cdot 3 5 \dot{1} \overset{4}{5}} - | \underline{\overset{5}{3} \cdot 5 6 6 \dot{1} \hat{6} 5 3} | \underline{\overset{10}{2 \dot{1} 2 3 2}} - |$

高胡 板胡

$\underline{5 \cdot 7} \underline{5 \cdot 7} | \underline{5 \cdot 3 5 6 1 \cdot 7} | \underline{6 \cdot 1 2 2 3 2 1 6} | \underline{5 5 6 5} - | \underline{\overset{15}{2 \cdot 1 2 3 2 2 3}} |$

高胡 板胡

$\underline{5 \cdot 3 5 6 1 \cdot 7} | \underline{6 \cdot 1 2 2 3 2 1 6} | \underline{5 5 6 5} - | \underline{\overset{20}{5 \cdot 3 5 6 6 \dot{1} \dot{1} \hat{6}}} | \underline{5 3 5 \dot{1} \overset{4}{5}} - |$

高胡 板胡

$\underline{3 \cdot 5 6 6 \dot{1} \hat{6} 5 3} | \underline{2 \dot{1} 2 3 2} - | \underline{1 \dot{1} 2 1 6 5} | \underline{5 3 5 6 1 \cdot 7} | \underline{\overset{25}{6 \cdot 1 2 2 3 2 1 6}} |$

高胡 板胡

$\underline{5 \overset{\sim}{5}} \underline{6 5} - | \underline{2 \cdot 1 2 1 2 3 2 2 3} | \underline{5 \cdot 3 5 3 5 6 1 \cdot 7} | \underline{6 \cdot 1 2 2 3 2 1 6} | \underline{5 \overset{\sim}{5}} \underline{6 5} - |$

高胡 板胡

$\underline{5 3 5 6 \cdot 1 5 6} | \underline{\overset{6}{1}} - - \underline{6 5} | \underline{5 3 5 3 5 6 5 \dot{1} \hat{6}} | \underline{\overset{6}{5}} - - - | \underline{6 \cdot 1 6 5 \overset{\sharp}{4} 5} | \underline{\overset{35}{5 3}} - - 5 |$

高胡 板胡

$\underline{1 \hat{6} 1 \hat{6} 1 6 5 \overset{\sharp}{4} 5 3} | 2 - - - | \underline{2 \cdot 1 2 3 5} - | \underline{6 6 \dot{1} 3} - | \underline{6 6 \overset{\sharp}{4} 3 4 3 2} | 1 - - 6 |$

高胡 板胡

$1 \underline{0 2 3 6 \dot{1}} | \underline{6 5 \overset{\sharp}{4} 5 3 2 \cdot 3} | \underline{2 3 5 2 7 6 \dot{1}} | 5 - - - | (\underline{5 3 5 6 \cdot 1 5 6} |$

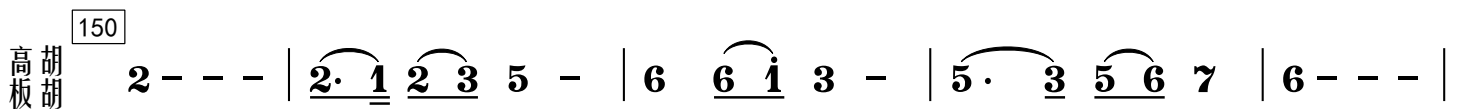
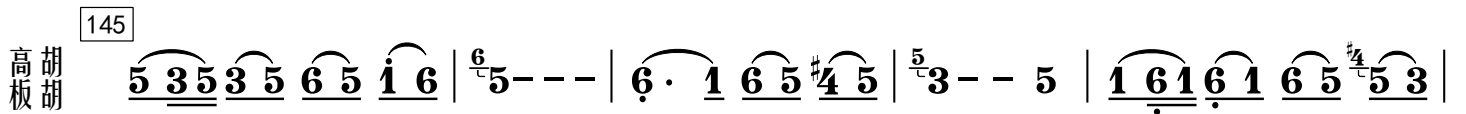
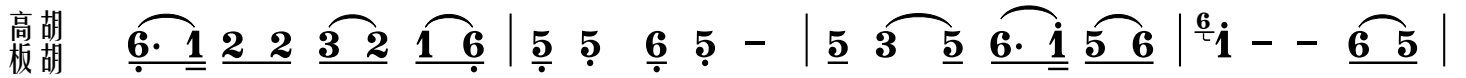
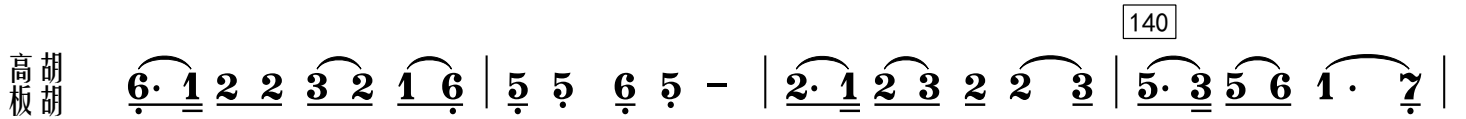
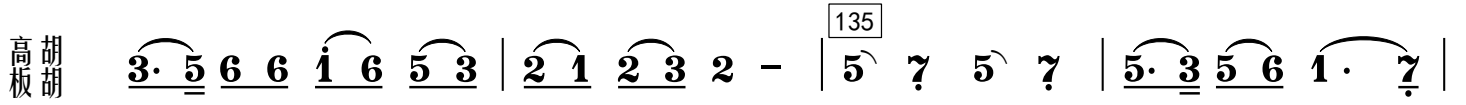
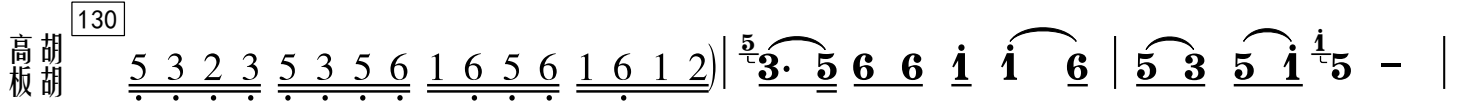
旋律

$\dot{1} - - \underline{6 5} | \underline{5 3 5 3 5 6 5 \dot{1} \hat{6}} | \underline{6 5 5} - - | \underline{6 \cdot 1 6 5 \overset{\sharp}{4} 5} | 3 - - 5 |$

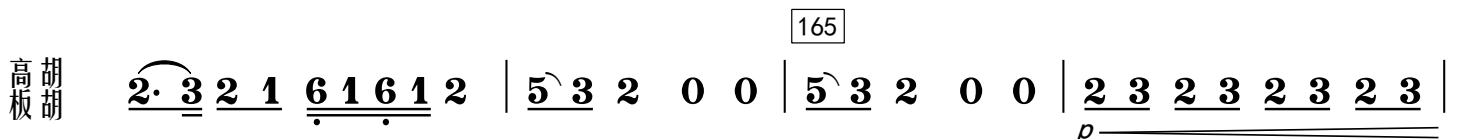
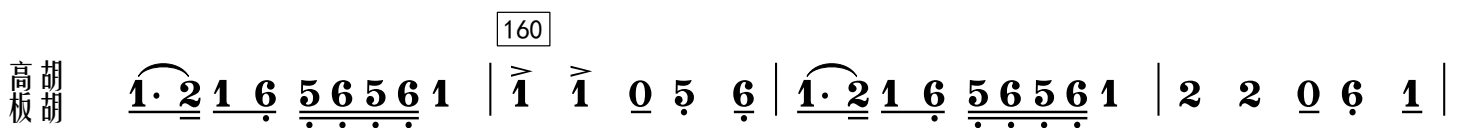
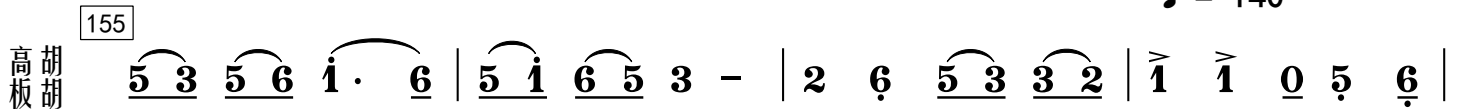
高胡 板胡

$\dot{1}) \underline{3 5 6} | \underline{\dot{1} - - -} | \underline{\dot{1} 2 2 7 6 5} | 3 - - - | \underline{3 7 6 5} |$





♩ = 140

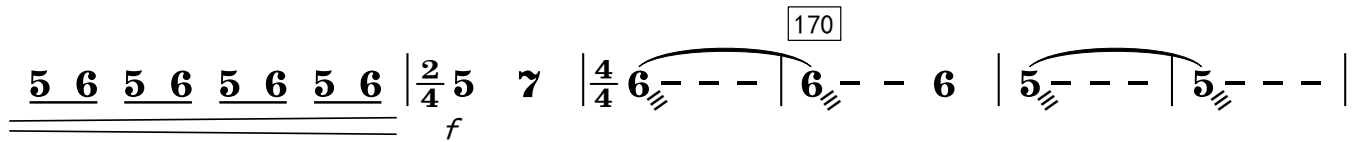


闹新春 - 高胡 板胡

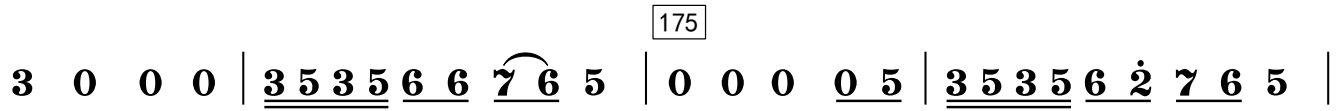
4

$\text{♩} = 140$

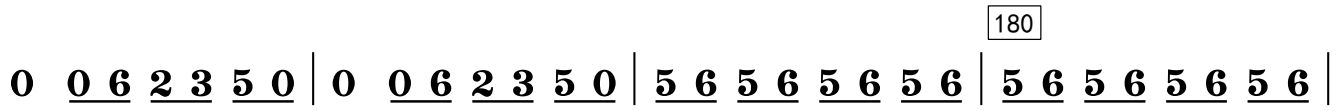
高胡  
高板



高胡  
高板



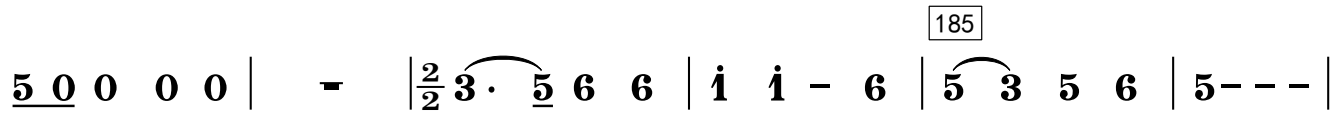
高胡  
高板



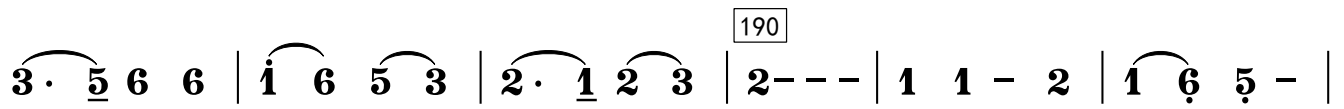
rit. .

中速 宽广地

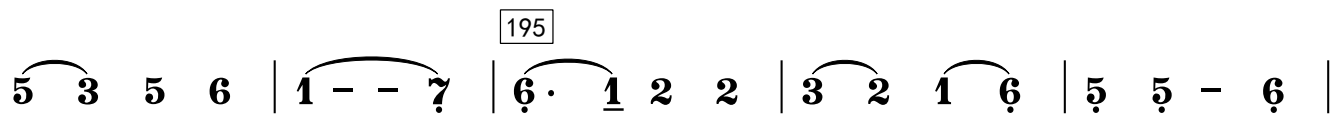
高胡  
高板



高胡  
高板

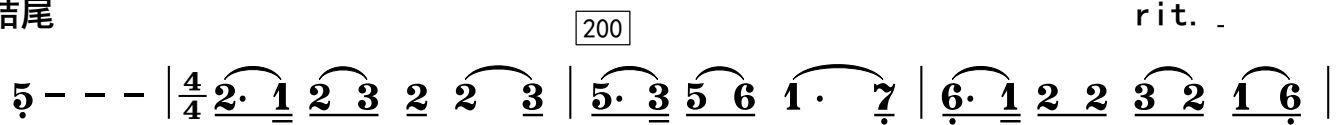


高胡  
高板



结尾

高胡  
高板



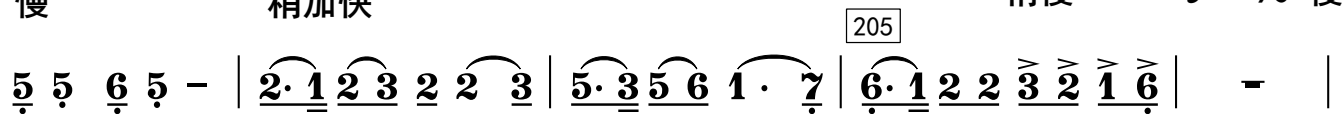
慢

稍加快

稍慢

$\text{♩} = 90$  慢

高胡  
高板



$\text{♩} = 136$  原速

高胡  
高板

